

AMSOIL®

FACTORY DIRECT RETAIL CATALOG

NEW PRODUCTS



See page 34



See page 38



See page 32

BUY WHOLESALE
See page 23

FREE DECAL
with each order

Synthetic Motor Oils • Synthetic Drivetrain Lubes
Oil & Air Filters • Fuel Additives • Appearance Products



The First in Synthetics®

The introduction of the world's first synthetic motor oil to meet American Petroleum Institute service requirements in 1972 set all-new standards for motor oil quality. AMSOIL synthetic motor oil outperformed conventional petroleum motor oils on all counts. It was clear from the start that this innovative product would play a major role in engine performance and engine life.

AMSOIL has remained steadfast in its commitment to quality and precision lubricant engineering, leading the charge over the past four decades with many industry firsts. This quality-first commitment has driven the introduction of numerous synthetic lubricants, premium filtration technologies and fuel additives that provide tangible, real-world value.

Today, virtually every other motor oil manufacturer has recognized the superiority of synthetic lubricants and has followed the AMSOIL lead with introductions of synthetic motor oils of their own.

Accept no substitutes – AMSOIL is “*The First in Synthetics.*”®



Three Tiers of AMSOIL Quality

Choose your drain interval.

Al J. Matyjas
SIGNATURE SERIES

**ONCE
PER
YEAR**



For those who want the absolute best engine protection, performance and maximum value through extended drain intervals.

SYNTHETIC MOTOR OIL
XL
EXTENDED LIFE

**TWICE
PER
YEAR**



For those who want extra engine protection and performance and the convenience of twice-per-year oil changes.

SYNTHETIC MOTOR OIL
OE
ORIGINAL EQUIPMENT

**ACCORDING
TO OWNER'S
MANUAL**



For those who want excellent engine protection and performance for vehicle manufacturer-recommended oil change intervals.

Ac. J. Amato ^{co.} **SIGNATURE SERIES**



AMSOIL Signature Series Synthetic Motor Oil represents the pinnacle of lubrication science. It is the result of 40 years of synthetic lubricant engineering. Signature Series brings not only industry-leading performance, but top value as well; its extended-drain performance delivers guaranteed protection for up to 25,000 miles/one year. AMSOIL Signature Series Synthetic Motor Oil offers a rare combination of performance, value and environmental responsibility.

Engineered to outperform conventional petroleum oils. Reduces friction, heat and wear for maximum power, performance and fuel efficiency. Resists high-temperature burn-off, chemical breakdown and sludging – keeps engines clean. Outstanding low-temperature fluidity for fast, dependable winter starts and immediate startup protection. Exceeds the most demanding worldwide performance standards and meets warranty requirements for all domestic and imported passenger car engines, both turbocharged and non-turbocharged. Up to 25,000-mile or one-year drain intervals.

Five bottles of AMSOIL Signature Series Synthetic Motor Oil are displayed in a row. From left to right, they are labeled ASM (green cap), ALM (dark blue cap), AZO (orange cap), ASL (red cap), and ATM (blue cap). The bottles vary in size and viscosity, with labels indicating 10W-20, 15W-20, 10W-30, and 15W-30. In the foreground, a dark sports car is on the left, and a globe of the Earth is on the right. A white arrow on the globe indicates a 3,000-mile oil change interval, while a larger white arrow indicates a 24,902-mile interval.

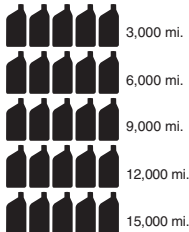
A standard 3,000-mile oil change gets you coast to coast.

The AMSOIL 25,000-mile oil change takes you **around the world.**

CONVENTIONAL MOTOR OIL

\$3.75 per quart x 25 quarts = \$93.75

5X
MORE
WASTE-OIL
GENERATED



Miles/Year
15,000

Cost/Year
\$93.75

LOST TIME
changing oil
5 times.



SYNTHETIC MOTOR OIL



Miles/Year
25,000

Cost/Year
\$50.75

\$93.75
- **\$50.75**

SAVINGS PER VEHICLE
\$43.00*

* Examples only. Based on July 1, 2011 figures. Prices subject to change.

In 1972, AMSOIL coined the phrase "extended drain interval." Many oil companies have since introduced synthetic motor oils of their own recommended for use beyond 3,000 miles. Original equipment manufacturers have been raising recommended oil drain intervals for vehicles, with some reaching 10,000 miles or higher where indicated by an electronic oil-life monitoring system. AMSOIL offers lubricants that safely extend drain intervals even further for greater savings.

Signature Series 0W-20 Synthetic Motor Oil

API Service SN (Resource Conserving), SM... • ILSAC GF-5, 4...

STOCK#	UNITS	PKG./SIZE	WT.LBS.	COST
ASMQT	EA	1 Quart	2.1	10.55
ASMQT	CA	12 Quarts	25.2	125.35
ASM1G	EA	1 Gallon	7.9	41.40
ASM1G	CA	4 Gallons	31.6	163.90

Signature Series 5W-20 Synthetic Motor Oil

API Service SN (Resource Conserving), SM... • ILSAC GF-5, 4...

STOCK#	UNITS	PKG./SIZE	WT.LBS.	COST
ALMQT	EA	1 Quart	2.1	10.15
ALMQT	CA	12 Quarts	25.2	120.50
ALM1G	EA	1 Gallon	7.9	39.80
ALM1G	CA	4 Gallons	31.6	157.45

Signature Series 0W-30 Synthetic Motor Oil

Recommended for applications requiring 0W-30, 5W-30 and 10W-30

API Service SN (Resource Conserving), SM... • ILSAC GF-5, 4...

STOCK#	UNITS	PKG./SIZE	WT.LBS.	COST
AZOOT	EA	1 Quart	2.1	10.55
AZOOT	CA	12 Quarts	25.2	125.35
AZ01G	EA	1 Gallon	7.9	41.40
AZ01G	CA	4 Gallons	31.6	163.90

Signature Series 5W-30 Synthetic Motor Oil

API Service SN (Resource Conserving), SM... • ILSAC GF-5, 4..., GM dexos1™

STOCK#	UNITS	PKG./SIZE	WT.LBS.	COST
ASLQT	EA	1 Quart	2.0	10.15
ASLOT	CA	12 Quarts	24.0	120.50
ASL1G	EA	1 Gallon	7.6	39.80
ASL1G	CA	4 Gallons	30.4	157.45

Signature Series 10W-30 Synthetic Motor Oil

API Service SN (Resource Conserving), SM... • ILSAC GF-5, 4...

STOCK#	UNITS	PKG./SIZE	WT.LBS.	COST
ATMQT	EA	1 Quart	2.1	10.15
ATMQT	CA	12 Quarts	25.2	120.50
ATM1G	EA	1 Gallon	7.9	39.80
ATM1G	CA	4 Gallons	31.6	157.45



Don't forget a premium, extended-service Ea Oil Filter. See page 30.

SYNTHETIC MOTOR OIL



Delivering extra engine protection and performance with the convenience of twice-per-year oil changes.



Formulated to last longer in service than conventional motor oils. Extended-drain boost technology maintains maximum wear protection for up to 10,000-mile/six-month drain intervals, or longer when recommended in owners' manuals or indicated by oil life monitoring systems. Save time, money and effort.

XL 0W-20 Synthetic Motor Oil

API Service SN, SM... • ILSAC GF-5, 4...

STOCK#	UNITS	PKG./SIZE	WT.LBS.	COST
XLZQT	EA	1 Quart	2.0	7.65
XLZQT	CA	12 Quarts	24.0	90.15
XLZ1G	EA	1 Gallon	7.8	29.65
XLZ1G	CA	4 Gallons	31.2	116.95

XL 5W-20 Synthetic Motor Oil

API Service SN, SM... • ILSAC GF-5, 4...

STOCK#	UNITS	PKG./SIZE	WT.LBS.	COST
XLMQT	EA	1 Quart	2.0	7.65
XLMQT	CA	12 Quarts	24.0	90.15
XLM1G	EA	1 Gallon	7.8	29.65
XLM1G	CA	4 Gallons	31.2	116.95

XL 5W-30 Synthetic Motor Oil

API Service SN, SM... • ILSAC GF-5, 4..., GM dexos1™

STOCK#	UNITS	PKG./SIZE	WT.LBS.	COST
XLFQT	EA	1 Quart	2.0	7.65
XLFQT	CA	12 Quarts	24.0	90.15
XLF1G	EA	1 Gallon	7.8	29.65
XLF1G	CA	4 Gallons	31.2	116.95

XL 10W-30 Synthetic Motor Oil

API Service SN, SM... • ILSAC GF-5, 4...

STOCK#	UNITS	PKG./SIZE	WT.LBS.	COST
XLTQT	EA	1 Quart	2.1	7.65
XLTQT	CA	12 Quarts	25.2	90.15
XLT1G	EA	1 Gallon	7.8	29.65
XLT1G	CA	4 Gallons	31.2	116.95

XL 10W-40 Synthetic Motor Oil

API Service SN, SM...

STOCK#	UNITS	PKG./SIZE	WT.LBS.	COST
XLOQT	EA	1 Quart	2.0	7.65
XLOQT	CA	12 Quarts	24.0	90.15

SYNTHETIC MOTOR OIL



Delivering excellent engine protection and performance for vehicle manufacturer-recommended oil change intervals.



Specially formulated for the longer oil change intervals recommended by vehicle manufacturers today. Advanced synthetic technology resists chemical breakdown for maximum wear protection (and peace of mind) well beyond the traditional 3,000-mile oil change interval.

OE 0W-20 Synthetic Motor Oil

API Service SN, SM... • ILSAC GF-5, 4...

STOCK#	UNITS	PKG./SIZE	WT.LBS.	COST
OEZQT	EA	1 Quart	2.0	6.10
OEZQT	CA	12 Quarts	24.0	71.95

OE 5W-20 Synthetic Motor Oil

API Service SN, SM... • ILSAC GF-5, 4...

STOCK#	UNITS	PKG./SIZE	WT.LBS.	COST
OEMQT	EA	1 Quart	2.0	6.10
OEMQT	CA	12 Quarts	24.0	71.95

OE 5W-30 Synthetic Motor Oil

API Service SN, SM... • ILSAC GF-5, 4..., GM dexos1™

STOCK#	UNITS	PKG./SIZE	WT.LBS.	COST
OEFQT	EA	1 Quart	2.0	6.10
OEFQT	CA	12 Quarts	24.0	71.95

OE 10W-30 Synthetic Motor Oil

API Service SN, SM... • ILSAC GF-5, 4...

STOCK#	UNITS	PKG./SIZE	WT.LBS.	COST
OETQT	EA	1 Quart	2.0	6.10
OETQT	CA	12 Quarts	24.0	71.95

Tough-to-reach fill hole?

Order a flexible pour spout with your oil to make the job easier. Fits quarts and gallons.

STOCK#	COST
G1230	0.75



BUILD IT.

CRUISE IT.



Assembly Lube

Formulated to cling to engine parts and provide exceptional wear protection while inhibiting rust and corrosion in newly built or rebuilt four-stroke engines. Designed to dissolve in oil, helping eliminate oil port clogging and deposit formation.

STOCK#	UNITS	PKG./SIZE	WT.LBS.	COST
EALTB	EA	(1) 4-oz. Tube	0.3	8.10
EALTB	CA	(12) 4-oz. Tubes	3.6	95.75

Break-In Oil

SAE 30 viscosity-grade oil formulated without friction modifiers to allow for quick and efficient piston ring seating in new and rebuilt high-performance and racing engines. Contains anti-wear additives to protect cam lobes, lifters and rockers during the critical break-in period when wear rates are highest, while increased film strength protects rod and main bearings from damage.

STOCK#	UNITS	PKG./SIZE	WT.LBS.	COST
BRKQT	EA	1 Quart	2.1	7.15
BRKQT	CA	12 Quarts	25.2	84.45

Z-ROD™ Synthetic Motor Oil

High-zinc, high-phosphorus formulation engineered specifically for classic cars and performance vehicles. Provides extra protection for flat-tappet cams, lifters, rockers and other areas susceptible to wear. Unique blend of rust and corrosion inhibitors ensure maximum protection during long-term storage.

Z-ROD 10W-30 Synthetic Motor Oil

API SL, SJ...

STOCK#	UNITS	PKG./SIZE	WT.LBS.	COST
ZRTQT	EA	1 Quart	2.1	9.80
ZRTQT	CA	12 Quarts	25.2	116.05

Z-ROD 20W-50 Synthetic Motor Oil

API SL, SJ...

STOCK#	UNITS	PKG./SIZE	WT.LBS.	COST
ZRFQT	EA	1 Quart	2.1	10.20
ZRFQT	CA	12 Quarts	25.2	120.90

RACE IT.



PRODUCTS THE
PROS USE



"It's not uncommon for us to see engine temps over 300°. There's no other oil I'd trust on race day."

Scott Douglas
11 World Championships

Dominator® Synthetic Racing Oil

Provides superior protection and performance for high-rpm, high-temperature racing and high-performance applications. Shear-stable formulation ensures critical engine components are protected for the duration of the race. Effectively reduces friction for maximum power and cooler engine temperatures, resulting in improved lap times and longer-lasting equipment.

Dominator 5W-20 Synthetic Racing Oil

STOCK#	UNITS	PKG./SIZE	WT.LBS.	COST
RD20QT	EA	1 Quart	2.0	11.80
RD20QT	CA	12 Quarts	24.0	139.95

Dominator 10W-30 Synthetic Racing Oil

STOCK#	UNITS	PKG./SIZE	WT.LBS.	COST
RD30QT	EA	1 Quart	2.0	11.85
RD30QT	CA	12 Quarts	24.0	140.75

Dominator 15W-50 Synthetic Racing Oil

STOCK#	UNITS	PKG./SIZE	WT.LBS.	COST
RD50QT	EA	1 Quart	2.1	12.45
RD50QT	CA	12 Quarts	25.2	148.05
RD501G	EA	1 Gallon	8.0	48.95
RD501G	CA	4 Gallons	32.0	194.15

OFFICIAL OIL



AHR



SAE 60 Super Heavy Weight Synthetic Racing Oil

High-viscosity oil designed for high-horsepower racing engines. Resists thinning effects of fuel dilution and provides exceptional wear protection, friction reduction and more power. Highly resistant to thermal degradation and oxidation.

API SL/CF, JASO MA • ISO-L-EMA

STOCK#	UNITS	PKG./SIZE	WT.LBS.	COST
AHRQT	EA	1 Quart	2.1	12.25
AHQRT	CA	12 Quarts	25.2	145.60
AHRTTP	EA	(1) 2.5 Gallon	19.9	117.25
AHRTTP	CA	(2) 2.5 Gallons	39.8	232.45

AMO



Premium Protection Synthetic Motor Oil

Formulated for use in gasoline engines and on- and off-road diesel engines not equipped with diesel particulate filters (DPFs). Offers excellent wear protection. Ideal for applications where the extra protection of a high-zinc formula is desired, including classic cars and motor homes. Excellent for flat-tappet, high-performance, heavy-duty and high-mileage applications.

Premium Protection 10W-40 Synthetic Motor Oil

API Service SL, SJ, . . . , CF, CI-4+ • JASO MA (motorcycle wet clutch) • ISO-L-EMA

STOCK#	UNITS	PKG./SIZE	WT.LBS.	COST
AMOQT	EA	1 Quart	2.1	10.10
AMOQT	CA	12 Quarts	25.2	119.50
AMO1G	EA	1 Gallon	8.0	39.45
AMO1G	CA	4 Gallons	32.0	156.10
AMOTP	EA	(1) 2.5 Gallon	19.5	95.80
AMOTP	CA	(2) 2.5 Gallons	39.0	189.55

ARO



Premium Protection 20W-50 Synthetic Motor Oil

API Service SL, SJ, . . . , CF, CI-4+ • JASO MA (motorcycle wet clutch) • ISO-L-EMA

STOCK#	UNITS	PKG./SIZE	WT.LBS.	COST
AROQT	EA	1 Quart	2.1	10.20
AROQT	CA	12 Quarts	25.2	120.90
ARO1G	EA	1 Gallon	8.1	39.90
ARO1G	CA	4 Gallons	32.4	157.95

PREMIUM PROTECTION FOR EUROPEAN VEHICLES



European Car Formula Synthetic Motor Oil

Specially formulated for the lubrication needs of European gasoline and diesel cars and light trucks. Blended with advanced AMSOIL synthetic base stocks, premium additives and broad viscosity ratings, allowing motorists to take advantage of the maximum extended drain intervals recommended by European automakers while providing second-to-none protection and performance.

European Car Formula 5W-40 Synthetic Motor Oil

API SM/CF • ACEA C3 • ACEA A3/B3 • ACEA A3/B4 •
MB 229.31, 229.51 • BMW LL-04 • Chrysler MS-10725 •
Porsche A40 • Saab • Volvo • VW 502.00, 505.00, 505.01

STOCK#	UNITS	PKG./SIZE	WT.LBS.	COST
AFLQT	EA	1 Quart	2.1	10.15
AFLQT	CA	12 Quarts	25.2	120.50
AFL5L	EA	(1) 5 Liter	11.1	52.25
AFL5L	CA	(2) 5 Liters	22.2	103.95

European Car Formula 5W-30 Synthetic Motor Oil

VW 504.00/507.00 • ACEA A3/B3 • ACEA A3/B4 • MB
229.51 • BMW LL-04 • Porsche C30

STOCK#	UNITS	PKG./SIZE	WT.LBS.	COST
AELQT	EA	1 Quart	2.1	11.00
AELQT	CA	12 Quarts	25.2	130.65
AEL5L	EA	(1) 5 Liter	11.1	56.75
AEL5L	CA	(2) 5 Liters	22.2	112.90

TOP SELLER

AFF



Formula 4-Stroke® Power Sports Synthetic Motor Oil

Specially formulated to provide serious protection and performance in recreational four-stroke motors, including ATVs and snowmobiles. Broad 0W-40 viscosity rating provides superior protection in both hot and cold temperature extremes.

SAE 0W-40 • API Service SG, SJ, SL/CF • JASO MA/MA2 • ISO-L-EMA2

STOCK#	UNITS	PKG./SIZE	WT.LBS.	COST
AFFQT	EA	1 Quart	2.0	11.00
AFFQT	CA	12 Quarts	24.0	130.65

Formula 4-Stroke® Marine Synthetic Motor Oil

Formulated specifically for use in four-stroke gasoline-fueled engines used in marine applications. Offers outstanding wear protection and viscosity stability, low volatility and excellent low-temperature fluidity. Certified to meet NMMA FC-W performance specifications. Meets "Warranty Certified" status of engine manufacturers. Recommended for use in four-stroke outboard motors including Honda, Yamaha, Mercury, Suzuki, Johnson-Evinrude (BRP), Nissan and Tohatsu. Excellent for use in marine inboard/outboard (I/O) engines including Mercury (MerCruiser), OMC and Volvo-Penta. Also for use with marine inboard power plants including Crusader, Marine Power, GM, Ford and Chrysler. Recommended for use with personal watercraft (PWC) including Sea Doo (BRP), Honda, Yamaha and Kawasaki.

WCT



WCF



10W-30 Formula 4-Stroke Marine Synthetic Motor Oil

API SL • NMMA FC-W (Registration #FB-30011B)

STOCK#	UNITS	PKG./SIZE	WT.LBS.	COST
WCTQT	EA	1 Quart	2.0	10.10
WCTQT	CA	12 Quarts	24.0	119.70

10W-40 Formula 4-Stroke Marine Synthetic Motor Oil

API SL • NMMA FC-W (Registration #FB-30010B)

STOCK#	UNITS	PKG./SIZE	WT.LBS.	COST
WCFQT	EA	1 Quart	2.0	10.85
WCFQT	CA	12 Quarts	24.0	128.60

OFFICIAL OIL



ASE



Formula 4-Stroke® Synthetic Small Engine Oil

Provides superior protection in the hot-temperature, severe-service operating conditions of both gasoline- and diesel-fueled small engines. Formulated with a high viscosity index and premium synthetic base oils that exceed both 10W-30 multi-grade and SAE 30 straight-grade viscosity requirements. Provides excellent all-season protection and performance. As a commercial-grade lubricant, it meets the demands of homeowner, commercial and industrial applications, improving productivity and reducing maintenance costs through superior engine protection.

Riding and Push Lawnmowers • Snowblowers • Generators • Pumps • Welders • Skid-Steers • Compressors • and more

API SL, SJ, SH, SG • API CF, CD • JASO MA/MA2 • ISO-L-EMA2

STOCK#	UNITS	PKG./SIZE	WT.LBS.	COST
ASEQT	EA	1 Quart	2.0	8.30
ASEQT	CA	12 Quarts	24.0	98.25

ASO



Formula 4-Stroke® Synthetic Scooter Oil

Formulated specifically to meet the special needs of today's high-tech air- and water-cooled four-stroke motorized scooters, offering advanced wear protection and friction reduction for longer equipment life and cooler operating temperatures. Its 10W-40 viscosity ensures consistent viscosity protection and provides additional protection for transmissions and gear boxes, while its friction modifier-free formulation ensures wet-clutch compatibility and smooth clutch operation. A special anti-corrosion additive package provides long-term protection during periods of inactivity and storage.

API SG, SL/CF • JASO MA/MA2 • ISO-L-EMA2

STOCK#	UNITS	PKG./SIZE	WT. LBS.	COST
ASOQT	EA	1 Quart	2.0	8.30
ASOQT	CA	12 Quarts	24.0	98.05

**DON'T PUT JUST
ANY OIL IN YOUR BIKE.
MAKE SURE IT'S OFFICIAL.**

AMSOIL

The First in Synthetics

MCV

MCF

MCT

MCS



O F F I C I A L O I L



Scott's Inn's

* The 2011 EBR 1190RS is factory-filled with AMSOIL Dominator® 15W-50 Synthetic Racing Oil.



*"There's a reason we chose AMSOIL as our factory-fill."**

– Erik Buell



20W-50 Synthetic Motorcycle Oil

API Service SG, SL/CF, CG-4 • JASO MA/MA2 (motorcycle wet clutch) • ISO-L-EMA2

Recommended for Harley-Davidson, Buell, KTM, Ducati, Aprilia, BMW, Triumph and other motorcycle engines. Superior synthetic formulation provides long service life and maximum protection against engine wear. Superior shear stability provides outstanding protection for high-performance engines, transmissions and primary chaincases. No friction modifiers. Wet-clutch compatible.

STOCK#	UNITS	PKG./SIZE	WT. LBS.	COST
MCVQT	EA	1 Quart	2.1	11.90
MCVQT	CA	12 Quarts	25.2	141.35
MCV1G	EA	1 Gallon	8.0	46.75
MCV1G	CA	4 Gallons	32.0	185.25

10W-40 Synthetic Motorcycle Oil

API Service SG, SL/CF • JASO MA/MA2 (motorcycle wet clutch) • ISO-L-EMA2

Recommended for Honda, Yamaha, Kawasaki, Victory, BMW and other motorcycle engines. Superior synthetic formulation provides long service life and maximum protection against engine wear. Superior shear stability provides outstanding protection for high-performance engines and transmissions. No friction modifiers. Wet-clutch compatible.

STOCK#	UNITS	PKG./SIZE	WT. LBS.	COST
MCFQT	EA	1 Quart	2.1	11.55
MCFQT	CA	12 Quarts	25.2	137.30
MCF1G	EA	1 Gallon	8.0	45.40
MCF1G	CA	4 Gallons	32.0	179.85

10W-30 Synthetic Motorcycle Oil

API Service SG, SL/CF, CG-4 • JASO MA/MA2 (motorcycle wet clutch) • ISO-L-EMA2

Recommended for Honda, Yamaha, Suzuki and Kawasaki motorcycles and scooters, as well as Arctic Cat, Can-Am, Honda, Kawasaki and Suzuki ATVs and UTVs. Superior synthetic formulation provides long service life and maximum protection against engine wear. Superior shear stability delivers outstanding protection for high-performance engines and transmissions. No friction modifiers. Wet-clutch compatible.

STOCK#	UNITS	PKG./SIZE	WT. LBS.	COST
MCTQT	EA	1 Quart	2.0	11.20
MCTQT	CA	12 Quarts	24.0	133.05

SAE 60 Synthetic Motorcycle Oil

API Service SG, SL/CF, GL-1 • JASO MA/MA2 (motorcycle wet clutch) • ISO-L-EMA2

Recommended for Harley-Davidson and big-bore motorcycles that require a 60-weight oil. Superior synthetic formulation provides long service life and maximum protection against engine wear. Superior shear stability provides outstanding protection for high-performance engines and transmissions. No friction modifiers. Wet-clutch compatible.

STOCK#	UNITS	PKG./SIZE	WT. LBS.	COST
MCSQT	EA	1 Quart	2.0	12.20
MCSQT	CA	12 Quarts	24.0	144.80

HPI



hp Injector® Synthetic 2-Cycle Oil

Precise synthetic formulation exceeds the lubrication demands of modern two-cycle engines. Premium synthetic base oils and MAX-DOSE™ additive system provide superior performance in direct fuel injected (DFI), electronic fuel injected (EFI) and carbureted outboard motors, as well as other recreational two-cycle equipment.

TC-W3 / API TC

STOCK#	UNITS	PKG./SIZE	WT. LBS.	COST
HPIQT	EA	1 Quart	2.0	8.90
HPIQT	CA	12 Quarts	24.0	105.55
HPI1G	EA	1 Gallon	7.9	34.80
HPI1G	CA	4 Gallons	31.6	137.45

TDR

MAXIMUM
PERFORMANCE



DOMINATOR® Synthetic 2-Cycle Racing Oil

Complex formulation specially engineered to address the heat, pressure and friction of race-engineered two-cycle engines, both on and off the track. Purpose-built for outstanding film strength and lubricity. Anti-friction, anti-scuff formula for maximum power and exceptional piston protection.

API TC / JASO FC

STOCK#	UNITS	PKG./SIZE	WT. LBS.	COST
TDRQT	EA	1 Quart	2.1	10.15
TDRQT	CA	12 Quarts	25.2	120.30
TDR1G	EA	1 Gallon	8.2	39.70
TDR1G	CA	4 Gallons	32.8	137.15

PRODUCTS THE PROS USE

"Ice oval racing is the most extreme test for a snowmobile engine, and DOMINATOR meets the challenge every time".

– P.J. Wanderscheid
4X AMSOIL Eagle River
World Champion

OFFICIAL OIL



MAXIMUM
RELIABILITY



AIT

INTERCEPTOR® Synthetic 2-Cycle Oil

Engineered specially for powersports applications and those engines equipped with exhaust power valves. Contains the finest synthetic base oils and additives available for exceptional cleanliness properties. Controls exhaust valve sticking and provides outstanding overall lubrication properties. Ideal for snowmobiles and personal watercraft.

API TC / JASO FC

STOCK#	UNITS	PKG./SIZE	WT. LBS.	COST
AITQT	EA	1 Quart	2.1	10.15
AITQT	CA	12 Quarts	25.2	120.30
AIT1G	EA	1 Gallon	8.2	39.70
AIT1G	CA	4 Gallons	32.8	157.15

Exceeds the performance requirements of Polaris®, Arctic Cat® and Ski-Doo® two-cycle snowmobiles.



WATCH THE
VIDEO

RACING IS RESEARCH™

"We spend countless hours testing the product."

www.amsoilracing.com/racingisresearch



ATP



Saber® 100:1 Pre-Mix Synthetic 2-Cycle Oil

Specifically designed for lean mix ratios in pre-mix applications. Saber Professional contains high-temperature detergents for small power equipment. Saber Outboard contains lower-temperature dispersants for water-cooled outboard motors. Recommended for 100:1 mix ratios in normal service (1.3 oz. per gallon).

Saber Professional 100:1 Pre-Mix Synthetic 2-Cycle Oil

ISO-L-EGD / API TC / JASO FD

STOCK#	UNITS	PKG./SIZE	WT. LBS.	COST
ATPBC	EA	(1) 8-oz. Bottle	0.7	4.30
ATPBC	CA	(12) 8-oz. Bottles	8.4	50.00
ATPPK	EA	(1) 1.5-oz. Pillow Pack	0.1	1.45
ATPPK	CA	(48) 1.5-oz. Pillow Packs	5.1	65.45
ATPQT	EA	1 Quart	2.1	10.75
ATPQT	CA	12 Quarts	25.2	127.80
ATPBA	EA	(1) 3.5-oz. Bottle	0.4	2.40
ATPBA	CA	(12) 3.5-oz. Bottles	4.8	27.30

Saber Outboard 100:1 Pre-Mix Synthetic 2-Cycle Oil

TC-W3 / API TC

STOCK#	UNITS	PKG./SIZE	WT. LBS.	COST
ATOBBC	EA	(1) 8-oz. Bottle	0.7	4.45
ATOBBC	CA	(12) 8-oz. Bottles	8.4	52.10
ATOQT	EA	1 Quart	2.2	11.45
ATOQT	CA	12 Quarts	26.4	135.90

ATO



TCC



Synthetic Chaincase & Gear Oil

Provides superior protection and performance for enclosed chains. Ideal for snowmobiles, ATVs and general equipment. Extreme-pressure additives provide extra wear protection. Extends chain life, repels water and inhibits rust, oxidation and foam. Superior low-temperature starting, performance and protection. Includes convenient pour spout.

STOCK#	UNITS	PKG./SIZE	WT. LBS.	COST
TCCCN	EA	(1) 16-oz. Bottle	1.3	9.00
TCCCN	CA	(6) 16-oz. Bottles	7.8	53.25
TCC05	EA	(1) 5-gal. Pail	32.4	187.90

STL



Shock Therapy® Suspension Fluid

Formulated for maximum stability and performance in high-performance fork and shock applications. Effectively controls friction and heat and significantly reduces wear and scuffing. Viscosity remains constant and foam and aeration are kept to a minimum, limiting shock fade and inconsistent dampening. Offers superior performance in temperature extremes.

Shock Therapy Suspension Fluid

Lightweight #5

STOCK#	UNITS	PKG./SIZE	WT. LBS.	COST
STLQT	EA	1 Quart	1.9	11.80
STLQT	CA	12 Quarts	22.8	140.35
STL05	EA	(1) 5-gal. Pail	37.7	223.80

AMSOIL STL #5 is recommended for applications that demand quick rebounds under extreme temperatures.

Shock Therapy Suspension Fluid

Medium #10

STOCK#	UNITS	PKG./SIZE	WT. LBS.	COST
STMQT	EA	1 Quart	2.1	11.60
STMQT	CA	12 Quarts	25.2	137.70
STM05	EA	(1) 5-gal. Pail	38.1	219.45

AMSOIL STM #10 is recommended for applications that require more dampening and slower rebounds.

STM



DELIVERING THE POWER OF SYNTHETICS



Rocky Horn
2011 Diesel Power
Challenge Winner



Premium API CJ-4 Synthetic Diesel Oil

The premium choice diesel oil for model-year 2007 and newer diesel engines requiring API CJ-4 emission quality oil standards. Also recommended for pre-2007 diesel engines. Incredibly shear-stable to withstand the stress of heat, soot and acids and help prevent deposits, corrosion and wear. Broad viscosity range offers superior protection over a wide temperature range. Effectively resists oil consumption and emissions, while improving fuel efficiency. Recommended for up to three times the original equipment manufacturer's drain interval recommendation in diesel applications, not to exceed 50,000 miles/600 hours or one year, whichever comes first.* Recommended for up to two times the original equipment manufacturer's drain interval recommendation in gasoline applications, not to exceed 15,000 miles or one year, whichever comes first. Compatible with all exhaust treatment devices and designed to extend the service life of particulate filters.

*Due to fuel dilution issues, extended drain intervals are not recommended for 2007-2009 Caterpillar C13 and C15 on-highway engines or 2007-present Dodge, Ford and GM light-duty diesel pickups.

Premium 5W-40 Synthetic Diesel Oil

API CJ-4, CI-4+, CF, SN • ACEA E7, E9 • Mack EO-O Premium Plus • DDC Power Guard 93K218 • Caterpillar ECF-3, ECF-2 • Cummins CES 20081 • Volvo VDS-4 • MB 228.31 • MS 10902 • MTU Type I & II • MAN 3275, 3575 • JASO DH-2 • Global DHD-1 • Renault RLD-3

STOCK#	UNITS	PKG./SIZE	WT. LBS.	COST
DEOQT	EA	1 Quart	2.1	10.10
DEOOT	CA	12 Quarts	25.2	119.70
DEO1G	EA	1 Gallon	8.0	39.50
DEO1G	CA	4 Gallons	32.0	156.35
DEOTP	EA	(1) 2.5 Gallon	19.5	95.95
DEOTP	CA	(2) 2.5 Gallons	39.0	189.90

Premium 15W-40 Synthetic Diesel Oil

API CJ-4, CI-4+, CF, SN • ACEA E7, E9 • Mack EO-O Premium Plus • DDC Power Guard 93K218 • Caterpillar ECF-3, ECF-2 • Cummins CES 20081 • Volvo VDS-4 • MB 228.31 • MS 10902 • MTU Type I & II • MAN 3275, 3575 • JASO DH-2 • Global DHD-1 • Renault RLD-3

STOCK#	UNITS	PKG./SIZE	WT. LBS.	COST
DMEQT	EA	1 Quart	2.1	9.90
DMEOT	CA	12 Quarts	25.2	117.25
DME1G	EA	1 Gallon	8.0	38.70
DME1G	CA	4 Gallons	32.0	153.10
DMETP	EA	(1) 2.5 Gallon	19.5	95.95
DMETP	CA	(2) 2.5 Gallons	39.0	185.90

OED



OE 15W-40 Synthetic Diesel Oil

Provides excellent protection and performance in both on- and off-road diesel engines for the original equipment manufacturer's recommended drain interval. Suitable for both modern and older diesel applications requiring API CJ-4 specifications. Exceeds the higher performance demands of modern engines and withstands the stress of heat, soot and acids to help prevent deposits, wear and corrosion.

API licensed CJ-4, CI-4+, SN... • ACEA E9 • DDC 93K218 • Cummins CES 20081 • MB 228.31 • CAT ECF-3, ECF-2, ECF-1-a • Mack EO-O • Volvo VDS-4 • MAN 3575 • Renault RLD-3 • MTU Type 2.1

STOCK#	UNITS	PKG./SIZE	WT. LBS.	COST
OEDQT	EA	1 Quart	2.1	6.80
OEDQT	CA	12 Quarts	25.2	80.40
OED1G	EA	1 Gallon	8.0	26.70
OED1G	CA	4 Gallons	32.0	105.05
OEDTP	EA	(1) 2.5 Gallon	19.5	64.35
OEDTP	CA	(2) 2.5 Gallons	39.0	126.70

Series 3000 5W-30 Synthetic Heavy Duty Diesel Oil

Engineered for on- and off-road diesel engines not equipped with diesel particulate filters (DPFs). Also for all gasoline engines recommending API SL specifications, including turbo-charged vehicles. Delivers better wear protection than other popular diesel oils and effectively reduces fuel consumption. Ideal for exhaust gas recirculating (EGR) engines.

Note: For 2007 and newer on-road diesel vehicles, see Premium Synthetic Diesel Oil on pg. 19 and OE Synthetic Diesel Oil on pg. 20.

API CI-4+/CF/CF-2/SL • Global DHD-1 • ACEA A3/B3, E2, E3, E5, E7 • JASO DH-1 • Mack EO-M, EO-N • DDC 93K214 • Caterpillar ECF-1A, ECF-2 • Cummins CES 20076, 20077, 20078 • Volvo VDS-3, VDS-2 • MB 228.1, 228.3, 229.1

STOCK#	UNITS	PKG./SIZE	WT. LBS.	COST
HDDQT	EA	1 Quart	2.1	11.15
HDDQT	CA	12 Quarts	25.2	132.25
HDD1G	EA	1 Gallon	8.0	43.70
HDD1G	CA	4 Gallons	32.0	173.10
HDDTP	EA	(1) 2.5 Gallon	19.6	106.25
HDDTP	CA	(2) 2.5 Gallons	39.2	210.50

ADVANCED
FUEL EFFICIENT FORMULA

HDD



Oil Analysis

AMSOIL and its subsidiary OIL ANALYZERS INC.® provide state-of-the-art oil analysis service to its customers, allowing them to monitor engine condition and maximize oil drain intervals. Customers receive detailed analysis reports via fax, e-mail and online reporting. Expert consultation of oil condition is easily accessible by phone (877-458-3315) or e-mail (info@oaitesting.com). Coolant and diesel fuel analysis is also available. For more information, see www.oaitesting.com.

STOCK#	PKG./SIZE	WT. LBS.	COST
KIT01	1 sample kit (includes two-way postage)	0.1	32.20
KIT02	1 sample kit (includes UPS shipping)	0.1	32.20
KIT06	1 sample kit	0.1	22.45
G1206	Oil Suction Pump w/10-ft. hose	0.1	27.50
G1571	Replacement Hose 25-ft.	0.1	8.75

Oil Analyzers
INC.

20

TO ORDER – Call 1-800-956-5695, 7 a.m. to 5 p.m. Central Time, M – F

15W-40 Synthetic Heavy Duty Diesel and Marine Oil



Engineered for on- and off-road diesel engines not equipped with diesel particulate filters (DPFs). High 12 TBN controls acids from combustion blow-by and EGR. High levels of detergency and dispersancy additives control soot thickening, oxidation and wear. Provides up to three times the original equipment manufacturer's drain interval recommendation in diesel applications, not to exceed 50,000 miles/600 hours or one year, whichever comes first. **Note:** For 2007 and newer on-road diesel vehicles, see Premium Synthetic Diesel Oil on pg. 19 and OE Synthetic Diesel Oil on pg. 20.

API CI-4+/CF/CF-2/SL/SJ • Global DHD-1 • ACEA A3/B3, E2, E3, E5, E7 • JASO DH-1 • Mack EO-M, EO-N • DDC 93K214 • Caterpillar ECF-1A, ECF-2 • Cummins CES 20076, 20077, 20078 • Volvo VDS-3, VDS-2 • MB 228.1, 228.3, 229.1 • MAN 271, 3275 • MTU Type II • Allison C-4

STOCK#	UNITS	PKG./SIZE	WT. LBS.	COST
AMEQT	EA	1 Quart	2.1	9.25
AMEQT	CA	12 Quarts	25.2	109.35
AME1G	EA	1 Gallon	8.0	36.05
AME1G	CA	4 Gallons	32.0	142.60
AMETP	EA	(1) 2.5 Gallon	19.6	87.45
AMETP	CA	(2) 2.5 Gallons	39.2	172.90

10W-30/SAE 30 Synthetic Heavy Duty Diesel Oil



Exceeds both 10W-30 multi-grade and SAE 30 straight-grade viscosity requirements. Engineered for on- and off-road diesel engines not equipped with diesel particulate filters (DPFs). Also recommended for gasoline engines requiring API SL or previous specifications. Excellent for heavy equipment and personal vehicles. Extends drain intervals. See the AMSOIL Product Information and Drain Interval Chart (G2281) for more information. **Note:** For 2007 and newer on-road diesel vehicles, see Premium Synthetic Diesels Oil on pg. 19 and OE Synthetic Diesel Oil on pg. 20.

API CI-4+/CH-4/CF/CF-2/SL • Global DHD-1 • ACEA A3/B3, E3, E5 • JASO DH-1 • Mack EO-M, EO-N • DDC 93K214 • Caterpillar ECF-1A, ECF-2 • Cummins CES 20076, 20077, 20078 • Volvo VDS-3, VDS-2 • MB 228.1, 228.3, 229.1 • MAN 271, 3275 • MTU Type II

STOCK#	UNITS	PKG./SIZE	WT. LBS.	COST
ACD1G	EA	1 Gallon	8.1	36.05
ACD1G	CA	4 Gallons	32.4	142.60

How to Order

TOLL-FREE TELEPHONE ORDERING

Dial 1-800-956-5695 (contiguous 48 states only and Alaska) *Note: there is a 7.5% freight surcharge on all products shipped to Alaska. Hours: 7 a.m. to 5 p.m. Central Time, Monday through Friday, except for statutory holidays. When calling, please provide your Referral Number (from the back cover of the catalog).

TECHNICAL QUESTIONS

Direct all technical questions to the AMSOIL Technical Services Department, AMSOIL INC., One AMSOIL Center, Superior, Wisconsin 54880 or call (715) 399-8324.

AMSOIL Warranty Statement

The use of AMSOIL products will not cause mechanical damage to any mechanically sound equipment when AMSOIL products are used in full compliance with AMSOIL recommendations and instructions. For full warranty statement see www.amsoil.com/warranty.aspx.

SHIPPING AND HANDLING

Orders are subject to the following shipping and handling schedule.

under 3 lbs.	• \$7.10	60 to 99.9 lbs.	• 37¢ per lb.
3 to 6.9 lbs.	• \$7.90	100 to 249.9 lbs.	• 34¢ per lb.
7 to 13.9 lbs.	• \$9.10	250 to 499.9 lbs.	• 30¢ per lb.
14 to 21.9 lbs.	• \$9.85	500 to 1,000 lbs.	• 28¢ per lb.
22 to 39.9 lbs.	• 47¢ per lb.	Over 1,000 lbs.	• 27¢ per lb.
40 to 59.9 lbs.	• 38¢ per lb.		

NOTE: AMSOIL products cannot be shipped to post office boxes. For products purchased in Alaska, add a 7.5% freight surcharge. Contact the Anchorage Distribution Center at (907) 745-3542 to determine if your order is being shipped to a remote access area. In these areas, actual freight costs will be charged.

PRODUCT DAMAGED DURING SHIPPING

If there is visible damage to your order upon delivery, refuse the order. It will be returned to AMSOIL INC. for inspection and a new order will be sent at no extra charge to you. If you discover hidden damage after accepting delivery of your order, call 1-800-956-5695 for damaged product instructions.

SALES TAX INFORMATION

AMSOIL INC. has an established sales tax rate for all states. Because AMSOIL is sometimes required to collect city, county and other taxes as well, the tax rate AMSOIL charges may be higher than just your sales tax. AMSOIL also collects any additional taxes on lubricating products required by certain states.

NOTE: Freight charges are subject to sales tax in Connecticut, Georgia, Nebraska, Nevada, Pennsylvania and Wisconsin. In California, Rhode Island, Texas and Utah, excise taxes are added to the product total before figuring your sales tax.

RETURN/EXCHANGE GUIDELINES

- Must be currently marketed products in resalable condition.
- All products in resalable condition can be returned within 30 days for a full refund of the purchase price and sales tax.
- Products purchased over 30 days, but less than 90 days, may be exchanged for other product of equal or greater value, less a 20 percent restocking fee.
- Customers wishing to return products after 30 days or to exchange products after 90 days will be advised to contact their Dealer for assistance.
- Shipping and handling fees are the customer's responsibility.
- Special order items cannot be exchanged or returned.

Call 1-800-956-5695 for instructions prior to returning any product.

HAWAII

AMSOIL products are available through independent AMSOIL Dealers and selected retailers.

To order in Hawaii, check your local Yellow Pages or call 1-800-777-8491 for the name of your nearest AMSOIL Dealer.

OIL FILTER, AIR FILTER OR FLUID CAPACITY QUESTIONS

For oil and air filter specifications, consult your owner's manual or the AMSOIL Product Look-up Guide at www.amsoil.com. Assistance also available when placing order. For fluid capacity levels, consult your owner's manual or the AMSOIL Product Look-up Guide at www.amsoil.com. Or call the AMSOIL Technical Service Department at 715-399-8324, 8 a.m. to 5 p.m. Central Time, M - F.

QUESTIONS

For questions on shipping, sales tax, damaged products, instructions, etc., call (715) 392-7101, 8 a.m. to 5 p.m. Central Time, M - F, except for statutory holidays.

Prices subject to change without notice.

Preferred Customer Program – Start buying wholesale today

Ten dollars gets you a six-month trial Preferred Customer membership for buying AMSOIL products at wholesale prices. Here's what Preferred Customers get:

- Preferred Customers buy AMSOIL products at wholesale prices.
- Preferred Customers can register over the telephone (1-800-777-7094). Have the referral number from back page ready when calling (if one is listed).
- Preferred Customers may change their memberships to become AMSOIL Dealers at any time.
- Preferred Customers receive a kit with information on more AMSOIL products and package sizes, and the monthly AMSOIL product, racing and application publication, *AMSOIL Magazine*.



Want More? Become an AMSOIL Dealer

AMSOIL products are sold through independent Dealers.

People like you. People looking for a full-time business or to earn extra money on a part-time basis.

You can start an independent AMSOIL Dealership for under \$50... and put as much – or as little – time into it as you want.

There's always plenty of support... never any hassles. No quotas to fill. No inventory requirements. You are your own boss. It's the ideal business opportunity.

You can sell to commercial and retail accounts as well as individuals. It's up to you... extra money, a full-time income or rock-bottom prices on AMSOIL products.

New customers call 1-800-956-5695 and order a free Dealer/Preferred Customer Information Packet for information on AMSOIL Preferred Customer and Dealership opportunities.

Multi-Vehicle Synthetic Automatic Transmission Fluid

Exceeds the performance requirements for domestic and foreign automatic transmission fluids. Offers smooth shifting and long transmission life. Provides automatic transmissions, power steering units and hydraulic equipment with excellent lubricating protection and better performance over a wider temperature range. Resists oxidation and thermal breakdown. Provides exceptional low-temperature protection. Formulated for excellent wear protection to last for extended drain intervals.



Use in Ford, Chrysler and GM Transmissions

AMSOIL Multi-Vehicle ATF is recommended for applications requiring the following performance specifications:

GM DEXRON® III-H • Ford MERCON® & MERCON® V • Chrysler ATF+4® • Toyota Type T-III and T-IV • Honda Z-1 (Not CVT) • Diamond SP II & III (Mitsubishi/Hyundai/Kia) • Mazda ATF-III, ATF-MV • Subaru ATF, ATF-HP • Nissan Matic D, J & K • Idemitsu K-17 • BMW LA2634 • LT 71141 • Audi G-052-025-A2 & G-052-162-A1 • Volvo 97340 • MB 236.1, 236.2, 236.5, 236.6, 236.7, 236.9 & 236.10 • JWS 3309 • NAG 1 • ETL-7045E, ETL-8072B & N402 • Voith 55.6335.XX (G607) & 55.6336.XX (G1363) • ZF TE-ML 03D, 04D, 09, 14A, 14B, 14C, 16L, 17C • Allison C-4, TES 389 • Mopar AS68RC

Use in power steering units or hydraulics where ATF is specified.

Not for use in CVT transmissions or Ford Type F applications.

STOCK#	UNITS	PKG./SIZE	WT. LBS.	COST
ATFQT	EA	1 Quart	2.0	11.50
ATFQT	CA	12 Quarts	24.0	136.70
ATF1G	EA	1 Gallon	7.9	45.20
ATF1G	CA	4 Gallons	31.6	179.05
ATFTP	EA	(1) 2.5 Gallon	19.3	109.90
ATFTP	CA	(2) 2.5 Gallons	38.6	217.80

Fuel Efficient Synthetic Automatic Transmission Fluid

Engineered to exceed the requirements of GM, Ford and Toyota where low-viscosity oil is required, providing outstanding performance without compromising protection, even in severe operating conditions. Delivers outstanding protection against sludge and varnish deposits that clog narrow oil passages and contribute to clutch glazing. Offers extraordinary cold-flow performance, improving shifting response and energy efficiency while reducing warm-up times. Provides an extra margin of protection over extended drain intervals.



GM DEXRON VI • Ford MERCON LV & SP • Toyota WS

STOCK#	UNITS	PKG./SIZE	WT. LBS.	COST
ATLQT	EA	1 Quart	2.0	11.50
ATLQT	CA	12 Quarts	24.0	136.70
ATLTP	EA	(1) 2.5 Gallon	19.5	109.90
ATLTP	CA	(2) 2.5 Gallons	39.0	217.80

MTG



Synthetic Manual Transmission and Transaxle Gear Lube

Designed to meet the special requirements of certain manual transmissions and transaxles. Provides improved internal component protection. Formulated with extreme-pressure additives and advanced synchromesh qualities that provide smooth shifts while protecting gears, bearings and seals. Non-corrosive to yellow metals. Recommended for manual transmissions and transaxles that require 75W-85, 75W-90 or 80W-90 viscosities.

75W-90 • API GL-4

STOCK#	UNITS	PKG./SIZE	WT. LBS.	COST
MTGQT	EA	1 Quart	2.0	14.80
MTGQT	CA	12 Quarts	24.0	176.00
MTG05	EA	(1) 5-gal. Pail	38.9	282.30
MTG55	EA	55-gal. Drum	434.0	2,685.75

MTF



Synthetic Synchromesh Transmission Fluid

Specifically designed for manual transmissions and transaxles with synchromesh systems that require light viscosity, non-extreme-pressure fortified oil. Formulated with advanced additive technology to provide proper friction characteristics for smooth shifting without grinding or bump shifting while providing the ultimate in gear and bearing protection. Outperforms motor oils in manual transmissions and provides excellent performance in extreme temperatures from -40° F to 300° F. Possesses outstanding anti-wear and anti-foam properties and is non-corrosive to yellow metals. Recommended for use in manual transmissions and transaxles. Not for use in engines or wet clutches.

STOCK#	UNITS	PKG./SIZE	WT. LBS.	COST
MTFQT	EA	1 Quart	2.1	12.70
MTFQT	CA	12 Quarts	25.2	150.90
MTF05	EA	(1) 5-gal. Pail	39.2	241.10
MTF55	EA	55-gal. Drum	436.0	2,266.30

ART



Super Shift® Racing Transmission Fluid

Specially formulated for high-horsepower and torque conditions. Designed to provide quick, solid shifts and prevent automatic transmissions from slipping, helping racers improve on elapsed times. Delivers exceptional friction reduction and reduced wear so clutch plates and transmissions last longer. Provides maximum torque transfer and brake power while resisting oxidation and thermal breakdown.

SAE 10W • Allison C-4 • Ford Type F

STOCK#	UNITS	PKG./SIZE	WT. LBS.	COST
ARTQT	EA	1 Quart	2.0	11.60
ARTQT	CA	12 Quarts	24.0	137.50

ATD



Torque-Drive® Synthetic Automatic Transmission Fluid

Engineered to eliminate the deficiencies common to all conventional petroleum ATFs, AMSOIL Torque-Drive provides superior performance and protection against thermal and oxidative degradation, sludge and varnish formation and viscosity shear down. Ideal for Allison Transmissions and heavy equipment.

Recommended for use in applications specifying Allison® TES-295, TES-389 or C-4, Dexron® III, Mercon®, TE-ML 14C, Voith 55.6336.XX (Voith G-1363)

STOCK#	UNITS	PKG./SIZE	WT. LBS.	COST
ATD1G	EA	1 Gallon	7.8	48.40
ATD1G	CA	4 Gallons	31.2	192.00
ATDTP	EA	(1) 2.5 Gallon	19.1	117.90
ATDTP	CA	(2) 2.5 Gallons	38.2	233.75

ATH



Synthetic Tractor/Hydraulic Transmission Oil

Formulated for combinations of transmissions, hydraulic systems, final drives, power take-off systems and wet brakes, including hydrostatic lawn mower transmissions. Exceeds the most demanding all-weather specifications of both Ford New Holland FNHA-2-C-200 & 2-C-201 and John Deere J20C & J20D, as well as most other tractor hydraulic/transmissions, eliminating the need for seasonal oil changes.

SAE 5W-30

STOCK#	UNITS	PKG./SIZE	WT. LBS.	COST
ATHQT	EA	1 Quart	2.1	9.85
ATHQT	CA	12 Quarts	25.2	116.65
ATH05	EA	(1) 5-gal. Pail	39.0	184.90
ATH30	EA	30-gal. Drum	242.1	973.15
ATH55	EA	55-gal. Drum	434.2	1,694.65



Severe Gear® Synthetic EP Gear Lube

Specifically engineered for high-demand applications, including trailer towing, heavy hauling, 4x4 off-road driving, commercial use and racing. Superior lube film strength combined with extra additives protects gears and bearings from scoring and wear. Resists high heat and possesses excellent cold-flow properties. Outperforms all conventional gear oils. Recommended for all types of vehicles such as turbo-diesel pickups, SUVs, autos, trucks, heavy equipment and motor homes. Compatible with most limited-slip differentials.

Severe Gear 75W-90 Synthetic Gear Lube

Top fuel efficiency and cold-temperature performance

API GL-5/MT-1 • MIL-PRF-2105E • MACK GO-J • Dana SHAES 234
(Eaton PS-037)

STOCK#	UNITS	PKG./SIZE	WT. LBS.	COST
SVGQT	EA	1 Quart	2.0	14.90
SVGQT	CA	12 Quarts	24.0	177.60
SVG05	EA	(1) 5-gal. Pail	38.8	285.00

Severe Gear 75W-110 Synthetic Gear Lube

Extra viscosity protection without sacrificing fuel efficiency

API GL-5/MT-1 • MIL-PRF-2105E • Mack GO-J • Dana SHAES 234
(Eaton PS-037)

STOCK#	UNITS	PKG./SIZE	WT. LBS.	COST
SVTQT	EA	1 Quart	2.1	15.45
SVTQT	CA	12 Quarts	25.2	184.10
SVT05	EA	(1) 5-gal. Pail	40.0	295.60

Severe Gear 75W-140 Synthetic Gear Lube

Maximum viscosity protection for severe-duty applications

API GL-5/MT-1 • MIL-PRF-2105E • MACK GO-J • Dana SHAES 234
(Eaton PS-037)

STOCK#	UNITS	PKG./SIZE	WT. LBS.	COST
SVOQT	EA	1 Quart	2.1	16.85
SVOQT	CA	12 Quarts	25.2	200.70
SVO05	EA	(1) 5-gal. Pail	39.2	322.90



Easy Installation

PRODUCT	STOCK#	COST
Hand Pump	G2039	10.95
Flexible Pour Spout	G1230	0.75
Nozzle Dispenser Caps (6)	G1242	0.80

PRODUCTS THE PROS USE
 "AMSOIL Severe Gear has significantly
 reduced heat in our race trucks' differentials."

— Chad Hord
 2011 AMSOIL Cup Winner





Severe Gear® Racing EP Synthetic Gear Lube

High-viscosity, extreme-pressure gear lube engineered for the demands of severe racing conditions, including off-road truck racing, rock racing, rock crawling, tractor pulling, funny car racing and dragster racing. Protects gears from shock-loading and tire shake. Resists sling-off from G-forces and high speeds. Effectively clings to gears, promoting cooler operating temperatures and extending gear and bearing life.

SAE 190 Severe Gear Synthetic Gear Lube API GL-5/MT-1

STOCK#	UNITS	PKG./SIZE	WT. LBS.	COST
SRNQT	EA	1 Quart	2.1	15.90
SRNQT	CA	12 Quarts	25.2	189.55
SRN05	EA	(1) 5-gal. Pail	40.0	304.60

SAE 250 Severe Gear Synthetic Gear Lube API GL-5/MT-1

STOCK#	UNITS	PKG./SIZE	WT. LBS.	COST
SRTQT	EA	1 Quart	2.1	15.90
SRTQT	CA	12 Quarts	25.2	189.55
SRT05	EA	(1) 5-gal. Pail	40.0	304.60

OFFICIAL OIL



Long Life Synthetic Gear Lube

Specifically engineered for extended drain intervals up to 500,000 miles as set by equipment manufacturers for over-the-road trucks. Protects against wear and improves equipment life. Excellent all-season summer and winter performance. Outperforms all conventional gear oils. Also excellent for passenger cars and trucks. Compatible with most limited-slip differentials.

75W-90 Long Life Synthetic Gear Lube

API GL-5/MT-1 • MIL-PRF-2105E • MACK GO-J+ • Dana SHAES 256 (Eaton PS-163)

STOCK#	UNITS	PKG./SIZE	WT. LBS.	COST
FGRQT	EA	1 Quart	2.1	12.35
FGRQT	CA	12 Quarts	25.2	146.45
FGR1G	EA	1 Gallon	8.1	48.55
FGR1G	CA	4 Gallons	32.4	192.55
FGR05	EA	(1) 5-gal. Pail	39.7	233.75

80W-140 Long Life Synthetic Gear Lube

API GL-5/MT-1 • MIL-PRF-2105E • MACK GO-J+ • Dana SHAES 256 (Eaton PS-163)

STOCK#	UNITS	PKG./SIZE	WT. LBS.	COST
FG005	EA	(1) 5-gal. Pail	40.0	233.75
FG016	EA	16-gal. Keg	135.0	709.65
FG030	EA	30-gal. Drum	249.0	1,248.75
FG055	EA	55-gal. Drum	446.0	2,185.10

AGL



80W-90 Synthetic Gear Lube

High-quality replacement for applications specifying SAE 80W-90 conventional gear lube. Synthetic construction provides improved cold-flow properties, high viscosity index, superior heat resistance and excellent wear protection.

API GL-5/MF-1 • MIL-PRF-2105E • MACK GO-J • Dana SHAES 234
(Eaton PS-037)

STOCK#	UNITS	PKG./SIZE	WT. LBS.	COST
AGLOT	EA	1 Quart	2.1	10.40
AGLOT	CA	12 Quarts	25.2	123.55
AGL1G	EA	1 Gallon	8.1	40.90
AGL1G	CA	4 Gallons	32.4	162.00
AGL05	EA	(1) 5-gal. Pail	39.8	196.20

AGM



OUTSTANDING
PROTECTION
FOR LOWER UNITS

Universal Synthetic Marine Gear Lube

Provides true marine gear performance, resists foaming and retains extreme-pressure qualities even when subjected to 10 percent water contamination. For use in outboard lower units, sterndrives, V-drives, bow and tunnel thrusters and marine transmissions requiring a SAE 75W-90 or 80W-90 meeting either GL-4 or GL-5 performance standards.

GL-5, GL-4

STOCK#	UNITS	PKG./SIZE	WT. LBS.	COST
AGMTB	EA	(1) 10-oz. Tube	1.2	7.10
AGMTB	CA	(6) 10-oz. Tubes	7.2	41.75
AGMQT	EA	1 Quart	2.1	11.25
AGMQT	CA	12 Quarts	25.2	133.45
AGM05	EA	(1) 5-gal. Pail	39.4	212.50

Slip Lock® Differential Additive

Formulated to eliminate gear-housing chatter in cars, trucks and SUVs equipped with limited-slip, posi-traction and locking differentials. Reduces banging and clunking associated with automatic locking differentials. Formulated for use with both synthetic and petroleum gear lubricants and safely replaces manufacturer-recommended friction modifiers. One tube treats differential capacities of two to four quarts.

Note: AMSOIL synthetic gear lubes do not require the use of this additive. However, not all differentials respond the same and if chatter is noticed, the addition of AMSOIL Slip Lock will eliminate it.

ADA



STOCK#	UNITS	PKG./SIZE	WT. LBS.	COST
ADATB	EA	(1) 4-oz. Tube	0.3	8.10
ADATB	CA	(12) 4-oz. Tubes	3.6	95.75

Ea® Oil Filters

AMSOIL Ea Oil Filters rank among the highest efficiency filters available to the auto/light-truck market. Featuring advanced full-synthetic technology, Ea Oil Filters provide greater efficiency, capacity and durability than cellulose filters, extending engine and filter life and reducing engine wear. When used in conjunction with AMSOIL synthetic motor oil, AMSOIL Ea Oil Filters are guaranteed for extended service life:

- Ea Filters designated with product code Ea15K are recommended for 15,000 miles/one year, whichever comes first, in normal or severe service.
- Ea Filters designated with product code EaO are recommended for 25,000 miles/one year, whichever comes first, in normal service or 15,000 miles/one year, whichever comes first, in severe service.



STOCK#	UNITS	WT. LBS.	COST	STOCK#	UNITS	WT. LBS.	COST
Ea15K01	EA	0.2	21.15	Ea15K32	EA	0.8	13.70
Ea15K02	EA	0.3	14.85	EaO34	EA	0.8	17.30
Ea15K03	EA	0.2	8.45	EaO35	EA	0.9	18.30
Ea15K04	EA	0.1	15.85	EaO37	EA	0.7	18.45
Ea15K09	EA	0.6	14.35	EaO40	EA	1.0	18.30
Ea15K10	EA	0.6	15.00	EaO41	EA	1.0	18.30
EaO11	EA	0.9	17.30	EaO42	EA	1.0	18.10
Ea15K12	EA	0.6	14.95	EaO43	EA	1.0	18.30
Ea15K13	EA	0.6	15.90	EaO45	EA	1.1	18.85
EaO15	EA	1.0	18.75	Ea15K46	EA	0.7	18.30
EaO17	EA	0.8	13.90	Ea15K50	EA	0.7	17.05
EaO18	EA	0.7	13.90	Ea15K51	EA	0.7	14.95
Ea15K20	EA	0.7	14.05	EaO52	EA	1.0	18.85
EaO21	EA	0.9	18.30	EaO58	EA	0.7	17.30
EaO22	EA	1.1	24.90	EaO59	EA	0.8	18.30
EaO23	EA	0.8	16.65	EaO64	EA	0.6	16.65
EaO24	EA	0.6	18.95	EaO80	EA	2.0	24.80
EaO25	EA	1.0	17.30	Ea15K88	EA	0.5	39.15
EaO26	EA	1.3	23.20	EaO96	EA	1.3	17.95
EaO27	EA	1.1	18.35	EaO98	EA	1.7	22.20
Ea15K29	EA	0.7	16.00	EaO99	EA	2.2	28.20
EaO31	EA	1.0	18.30				

Which filter do I need?

Call 1-800-956-5695 (Monday-Friday, 7 a.m. - 5 p.m. Central Time) or contact the AMSOIL Dealer listed on the back of your catalog (if one is listed) to determine the appropriate filter for each application. When AMSOIL Ea Oil Filters are used with a motor oil other than AMSOIL motor oil the filter should be changed according to the vehicle manufacturer recommendation.

Ea Air and Oil Filters are available to Dealers and Preferred Customers by the case. See page 23 for information on becoming a Dealer or Preferred Customer.

Fill in your vehicle information. Then call 1-800-956-5695 (Monday - Friday, 7 a.m. - 5 p.m. Central Time). You may also contact the AMSOIL Dealer listed on the back of your catalog (if one is listed) to determine your AMSOIL Oil and Air Filters.

Make _____ Year _____ Model _____

Engine _____

VIN _____

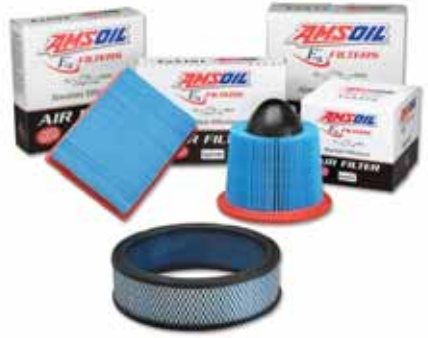
Your AMSOIL Oil Filter is _____ Your AMSOIL Air Filter is _____

Your WIX Oil Filter is _____ Your WIX Air Filter is _____

Ea® Air Filters

AMSOIL Ea Air Filters incorporate nanofiber technology which has been used exclusively in severe and heavy-duty applications.

AMSOIL Ea Filters are more efficient and have greater capacity than cellulose and wet-gauze filters, effectively extending engine and filter life and reducing engine wear. Cleaning of Ea Filters with a shop vacuum or low-pressure shop air is recommended every 25,000 miles or one year, and they have a total service life of 100,000 miles or four years.



STOCK#	UNITS	WT. LBS.	COST	STOCK#	UNITS	WT. LBS.	COST
EaA04	EA	0.9	34.15	EaA204	EA	1.5	47.45
EaA08	EA	1.0	38.10	EaA205	EA	1.2	34.15
EaA22	EA	0.9	29.55	EaA206	EA	0.9	34.15
EaA23	EA	1.1	29.55	EaA207	EA	1.0	34.15
EaA24	EA	0.9	34.15	EaA208	EA	1.0	34.15
EaA25	EA	2.1	38.10	EaA209	EA	1.0	47.45
EaA29	EA	1.0	38.10	EaA210	EA	0.9	38.10
EaA32	EA	1.1	29.55	EaA211	EA	1.3	47.45
EaA47	EA	0.6	29.55	EaA212	EA	1.0	38.10
EaA49	EA	0.8	34.15	EaA213	EA	0.9	38.10
EaA51	EA	1.9	38.10	EaA214	EA	0.8	38.10
EaA52	EA	0.7	38.10	EaA215	EA	2.5	47.45
EaA74	EA	0.8	34.15	EaA216	EA	1.6	47.45
EaA81	EA	0.7	29.55	EaA217	EA	0.8	47.45
EaA82	EA	0.7	29.55	EaA218	EA	0.5	47.45
EaA83	EA	1.3	47.45	EaA219	EA	0.5	38.10
EaA86	EA	0.6	29.55	EaA220	EA	0.5	38.10
EaA87	EA	0.6	29.55	EaA221	EA	1.0	38.10
EaA88	EA	0.7	34.15	EaA222	EA	1.0	47.45
EaA101	EA	0.9	34.15	EaA223	EA	0.3	47.45
EaA103	EA	2.5	59.10	EaA224	EA	0.4	38.10
EaA104	EA	1.2	47.45	EaA225	EA	0.5	38.10
EaA106	EA	1.9	47.45	EaA226	EA	0.9	47.45
EaA111	EA	2.3	59.10	EaA227	EA	0.2	47.45
EaA112	EA	2.8	59.10	EaA228	EA	0.8	34.15
EaA118	EA	1.3	38.10	EaA229	EA	0.8	29.55
EaA122	EA	1.1	38.10	EaA232	EA	1.0	29.55
EaA123	EA	1.7	47.45	EaA233	EA	0.2	29.55
EaA124	EA	0.8	38.10	EaA234	EA	1.0	29.55
EaA127	EA	0.8	34.15	EaA237	EA	0.2	34.15
EaA128	EA	1.1	38.10	EaA238	EA	1.0	34.15
EaA129	EA	1.1	34.15	EaA239	EA	0.9	29.55
EaA170	EA	1.0	34.15	EaA240	EA	4.5	34.15
EaA176	EA	1.5	47.45	EaA289	EA	0.9	38.10
EaA191	EA	1.1	38.10	EaA419	EA	0.9	38.10
EaA200	EA	1.0	38.10	EaA484	EA	1.0	38.10
EaA201	EA	0.8	38.10	EaA524	EA	0.7	34.15
EaA202	EA	0.8	29.55	EaA728	EA	1.7	47.45
EaA203	EA	1.9	47.45				

More Premium Ea® Filters

AMSOIL offers a variety of other Ea oil and air filters constructed with premium nanofiber technology. Call 1-715-399-8324 (Monday-Friday, 8 a.m. - 5 p.m. Central Time) for Ea Heavy-Duty Extended-Life Oil Filters, Ea By-Pass, Ea Universal Air Induction, Ea Racing and Ea Pre-Filter application information. Call 1-800-956-5695 (Monday-Friday, 7 a.m. - 5 p.m. Central Time) for motorcycle filter application information.

NEW!



Ea Heavy-Duty Extended-Life Oil Filters

Provide excellent filtering efficiency and high contaminant capacity for heavy-duty on- and off-road gasoline and diesel applications. Provide extended service intervals that coincide with the maximum drain intervals of AMSOIL synthetic motor oils.



EaBP By-Pass Filters

High-efficiency by-pass filters effectively remove minute dirt particles and soot. Provides an efficiency rating of 98.7 percent at two microns and filters all the oil in a typical five-quart sump in less than 10 minutes at normal operating RPM.

Some mechanical ability required for installation.



Ea Universal Air Induction Filters

Fit most popular air intake systems on the market, providing improved cold air intake and excellent efficiency for superior engine protection and performance. Cleanable and remain serviceable for long filter life.



Ea Racing Air Filters

Specially designed for carbureted racing and street rod applications, providing higher dirt-holding capacity, lower pressure drop and greater airflow and efficiency. Cleanable and remain serviceable for long filter life.



Ea Pre-Filters

Constructed of woven mesh and designed to fit over the top of Ea Racing and Air Induction Filters, preventing large particles from sticking to them and blocking airflow. Easily removed and shaken free of debris in seconds. Cleanable and remain serviceable for up to one year.



Ea Motorcycle Oil Filters

Designed for motorcycles, ATVs and four-stroke personal watercraft, snowmobiles and outboard motors, stopping smaller dirt particles, offering less restriction, extending equipment and filter life and improving performance. Fluted for easy removal. Available in black or chrome.

GRG



Series 2000 Synthetic Racing Grease

Ultimate protection for hard-driven, high-performance vehicles. Dramatically reduces friction and wear for improved performance.

NLGI No. 2, GC/LB

STOCK#	UNITS	PKG./SIZE	WT. LBS.	COST
GRGCR	EA	(1) 14-oz. Cartridge	1.0	12.75
GRGCR	CA	(10) 14-oz. Cartridges	10.0	122.60

Synthetic Polymeric Off-Road Grease

Formulated to resist impact/pound-out and provide outstanding protection and performance in the extreme environments faced in heavy-duty off-road equipment. Provides exceptional adhesion and cohesion properties, resists water washout and stays in place longer, providing outstanding lubrication over extended service intervals, reducing maintenance costs and extending equipment life.

GPOR1

GPOR2



Synthetic Polymeric Off-Road Grease

NLGI No. 1

STOCK#	UNITS	PKG./SIZE	WT. LBS.	COST
GPOR1CR	EA	(1) 15-oz. Cartridge	1.0	9.30
GPOR1CR	CA	(10) 15-oz. Cartridges	10.0	88.60

Synthetic Polymeric Off-Road Grease

NLGI No. 2

STOCK#	UNITS	PKG./SIZE	WT. LBS.	COST
GPOR2CR	EA	(1) 15-oz. Cartridge	1.0	9.65
GPOR2CR	CA	(10) 15-oz. Cartridges	10.0	92.40

Synthetic Polymeric Truck, Chassis and Equipment Grease

Delivers excellent wear protection and performance in the severe-service, extreme-pressure environments faced in medium- and heavy-duty over-the-road trucks and equipment. Clings tenaciously to metal surfaces and delivers maximum impact/pound-out resistance, staying in place to seal out water and contaminants and provide a protective barrier between metal components. Extended service life reduces the need for frequent re-application (or requires less grease at each servicing), reducing maintenance costs and increasing equipment life.

GPTR1

GPTR2



Synthetic Polymeric Truck, Chassis and Equipment Grease

NLGI No. 1

STOCK#	UNITS	PKG./SIZE	WT. LBS.	COST
GPTR1CR	EA	(1) 14-oz. Cartridge	1.0	7.95
GPTR1CR	CA	(10) 14-oz. Cartridges	10.0	75.60

Synthetic Polymeric Truck, Chassis and Equipment Grease

NLGI No. 2

STOCK#	UNITS	PKG./SIZE	WT. LBS.	COST
GPTR2CR	EA	(1) 14-oz. Cartridge	1.0	8.15
GPTR2CR	CA	(10) 14-oz. Cartridges	10.0	78.00

NEW!



Synthetic Multi-Purpose Grease

Reduces friction and wear in high-speed/high-temperature components such as automotive wheel bearings and electric motors. Keeps components running clean and trouble-free for outstanding performance and long life.

NLGI No. 2, GC/LB

STOCK#	UNITS	PKG./SIZE	WT. LBS.	COST
GLCCR	EA	(1) 14-oz. Cartridge	1.0	7.55
GLCCR	CA	(10) 14-oz. Cartridges	10.0	71.10
GLC3P	EA	(3) 3-oz. Cartridges	0.6	10.10
GLC3P	CA	(30) 3-oz. Cartridges	5.6	95.00
GLCKT	EA	Grease Gun Kit	1.6	28.60

NEW!



GLC3P



GLCKT

GWR



NEW!

Synthetic Water Resistant Grease

Resists water washout and corrosion. Unparalleled protection for boat trailer wheel bearings, outboard motors, ATVs, UTVs and other components frequently exposed to water.

NLGI No. 2, GC/LB

STOCK#	UNITS	PKG./SIZE	WT. LBS.	COST
GWRRCR	EA	(1) 14-oz. Cartridge	1.0	8.10
GWRRCR	CA	(10) 14-oz. Cartridges	10.0	76.70
GWR3P	EA	(3) 3-oz. Cartridges	0.6	11.00
GWR3P	CA	(30) 3-oz. Cartridges	5.6	103.65

GXC



X-Treme Synthetic Food Grade Grease

An ultra-premium lubricant designed for high levels of protection in food and pharmaceutical industry equipment. USDA H-1 rated for incidental contact with food.

NLGI NO. 2 HIGH TEMPERATURE EP

STOCK#	UNITS	PKG./SIZE	WT. LBS.	COST
GXCCR	EA	(1) 14-oz. Cartridge	1.0	9.90
GXCCR	CA	(10) 14-oz. Cartridges	10.0	94.20

ABC



Semi-Synthetic Bar and Chain Oil

Clings to metal surfaces better than other oils.
Delivers outstanding lubrication and protection.

STOCK#	UNITS	PKG./SIZE	WT. LBS.	COST
ABCQT	EA	1 Quart	2.1	5.60
ABCQT	CA	12 Quarts	25.2	65.65
ABC1G	EA	1 Gallon	8.1	21.60
ABC1G	CA	4 Gallons	32.4	84.80
ABC05	EA	(1) 5-gal. Pail	39.2	101.10

PCI



Synthetic Compressor Oil

Provides outstanding protection and performance in rotary screw, rotary vane, reciprocating and other compressor applications. Compatible with PAO-, ester- and petroleum-based compressor oils. Not compatible with glycol- or silicone-based compressor oils.

Synthetic Compressor Oil

ISO 46, SAE 20

STOCK#	UNITS	PKG./SIZE	WT. LBS.	COST
PCIQT	EA	1 Quart	2.0	10.85
PCIQT	CA	12 Quarts	24.0	128.60
PCI05	EA	(1) 5-gal. Pail	38.4	204.50

Synthetic Compressor Oil

ISO 100, SAE 30/40

STOCK#	UNITS	PKG./SIZE	WT. LBS.	COST
PCKQT	EA	1 Quart	2.1	11.45
PCKQT	CA	12 Quarts	25.2	135.90
PCK05	EA	(1) 5-gal. Pail	38.8	216.50

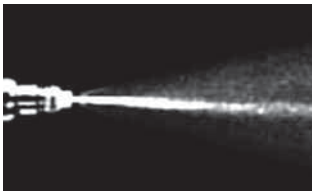


**Industry's Most Advanced
Formulation Improves
Fuel Economy**

P.i.® Performance Improver

P.i. Performance Improver ranks among the most potent gasoline additives available today. As a concentrated detergent, it is outstanding in cleaning combustion chamber deposits, intake valve deposits and port fuel injector deposits, eliminating the need for expensive fuel injector cleaning procedures. It is ideal for use prior to emissions inspections, and it helps maintain peak engine efficiency, fuel economy, power and drivability in newer low mileage engines. In engines with accumulated deposits, P.i. provides improved fuel mileage up to 5.7%, reduced emissions, restored power and performance, reduced need for higher octane fuel, reduced carbon rap and preignition, better drivability and smoother operation after only one tank of gasoline. Treat one full tank of gas every 4,000 miles (100 hours of service for marine, stationary and off-road gas-powered engines). One bottle treats one full tank of gas up to 20 gallons.

STOCK#	UNITS	PKG./SIZE	WT. LBS.	COST
APICN	EA	(1) 12-oz. Bottle	0.9	11.55
APICN	CA	(12) 12-oz. Bottles	10.8	137.25

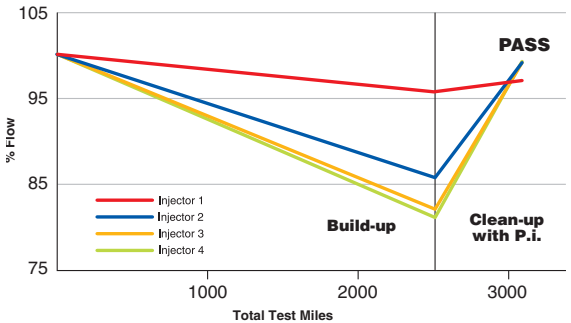


Injector spray pattern before P.i. treatment.



Injector spray pattern after P.i. treatment.

Two of the four dirty injectors tested were fouled >15% and another was fouled >10%. After one tank of operation on AMSOIL P.i., all injectors returned to >95% flow.



Intake valve before P.i. treatment.



Intake valve after P.i. treatment.



AQS



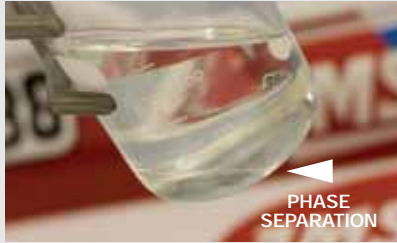
Addresses Ethanol-Related
Performance issues

Quickshot®

Formulated to thoroughly clean varnish, gums and insoluble debris in two- and four-stroke gasoline-powered small engines and powersports equipment fuel systems, restoring peak performance. Effectively addresses performance issues related to ethanol, water and dirty pump gas. Stabilizes fuel between uses and during short-term storage periods. See package for treat rates.

Motorcycles • Snowmobiles • Boats • ATVs • Edgers • Tillers • Mowers • Snowblowers • Chainsaws • Generators • Farm & Construction Equipment • and more

STOCK#	UNITS	PKG./SIZE	WT. LBS.	COST
AQSCN	EA	(1) 8-oz. Bottle	0.6	8.80
AQSCN	CA	(6) 8-oz. Bottles	3.6	52.20
AQSQT	EA	1 Quart	2.0	27.25
AQSQT	CA	12 Quarts	24.0	325.25



Phase separation is when ethanol/water mixtures fall to the bottom of fuel tanks and containers, leading to lean-burn conditions.

Quickshot helps keep water molecules dispersed to prevent phase separation.

Degraded fuel can present a major maintenance issue in motorcycle engines, forming varnish, gum and insoluble debris that clog carburetors, fuel injectors and fuel filters. Carbon buildup can form on the tops of pistons resulting in pre-ignition, rough idling and poor throttle response. Fuel-related problems are only expected to intensify in the coming years as the ethanol content in pump gasoline continues to increase.

AMSOIL Quickshot® (AQS) is a premium fuel additive formulated to thoroughly clean and restore peak performance in motorcycle and powersports equipment fuel systems. It also stabilizes fuel between uses and during short-term storage periods.

AST



Gasoline Stabilizer

Formulated to keep fuel from deteriorating during storage. Reduces the oxidation process to prevent varnish and gum buildup in gasoline, which can clog injectors, stick floats and cause poor engine performance. Treat rate is one ounce with every 2.5 gallons of fuel. One bottle treats 40 gallons.

STOCK#	UNITS	PKG./SIZE	WT. LBS.	COST
ASTCN	EA	(1) 16-oz. Bottle	1.1	11.15
ASTCN	CA	(6) 16-oz. Bottles	6.6	66.25

FOG



Engine Fogging Oil

Superior film retention provides stored equipment with long-term protection against corrosion and dry starts, extending engine life and reducing operating expenses. Its aerosol spray formulation offers easy and clean application, while reaching more components and offering complete distribution of the oil, something especially beneficial in applications with horizontal cylinder orientation, such as outboard motors.

STOCK#	UNITS	PKG./SIZE	WT. LBS.	COST
FOGSC	EA	(1) 12-oz. Aerosol Can	0.8	7.25
FOGSC	CA	(6) 12-oz. Aerosol Cans	4.8	42.80

AOB



DOMINATOR® Octane Boost

Improves the performance of all two-cycle and four-cycle gasoline fueled engines. Maximizes power, reduces engine knock and improves ignition and engine response. Helps fuel burn cleaner and removes carbon deposits. Excellent as a lead substitute at same treat rates in collector automobiles, older off-road equipment, 4x4 off-road vehicles and gasoline racing vehicles. One bottle treats 15 gallons.

STOCK#	UNITS	PKG./SIZE	WT. LBS.	COST
AOBBE	EA	(1) 12-oz. Bottle	0.8	9.65
AOBBE	CA	(6) 12-oz. Bottles	4.8	57.15

MOB



Motorcycle Octane Boost

Increases octane up to three numbers for maximum power and efficiency. Designed to improve startup performance and eliminate engine ping or knock for increased power at low-rpm operation. Treat rate is 1.3 oz. per gallon of fuel. One bottle treats four to six gallons.

STOCK#	UNITS	PKG./SIZE	WT. LBS.	COST
M0BCN	EA	(1) 4-oz. Bottle	0.4	4.85
M0BCN	CA	(12) 4-oz. Bottles	4.8	56.70

UP TO 5%
FUEL ECONOMY IMPROVEMENT



ADF

Diesel Concentrate

Total system cleaner and lubricity improver for all types of heavy and light-duty diesel engines. Formulated with ultra-low-sulfur diesel fuel (ULSD) in mind, Diesel Concentrate controls the problems created by exhaust gas recirculating (EGR) systems by neutralizing acids during combustion, minimizing acidic cylinder wear, reducing the rate of TBN depletion and maintaining oil quality. Cleans fuel injectors and combustion chamber for improved efficiency and better sealing and minimizes soot-loading. Improves the oxidation and thermal stability of diesel fuel, improves fuel economy by up to 5 percent, restores horsepower and protects against water contamination. Compatible with all types of exhaust emission systems, including diesel particulate filters (DPF's). Also recommended in heating oil furnace applications. One ounce treats five gallons of fuel. One 16-oz. bottle treats 80 gallons.

STOCK#	UNITS	PKG./SIZE	WT. LBS.	COST
ADFCN	EA	(1) 16-oz. Bottle	1.2	7.70
ADFCN	CA	(12) 16-oz. Bottles	14.4	91.20
ADFHG	EA	(1) 64-oz. Bottle	4.8	24.35
ADFHG	CA	(6) 64-oz. Bottles	28.8	145.40
ADF05	EA	(1) 5-gal. Pail	40.2	210.50



ACF

Diesel Cold Flow Improver

Recommended for low-temperature applications below 40°F. Effectively modifies wax crystal formation at low temperatures to depress diesel fuel pour point and improve cold-flow filtration properties. Lowers the cold filter plugging point (CFPP) by as much as 34°F and decreases the need for #1 diesel fuel diluted with kerosene. Contains jet fuel-type deicer to help prevent ice formation in fuels contaminated with water. Compatible with diesel particulate filters (DPFs). Two ounces treat five gallons of fuel. One bottle treats 40 gallons.

STOCK#	UNITS	PKG./SIZE	WT. LBS.	COST
ACFCN	EA	(1) 16-oz. Bottle	1.2	7.30
ACFCN	CA	(12) 16-oz. Bottles	14.4	86.35
ACF05	EA	(1) 5-gal. Pail	40.0	198.85



DFC

Diesel Concentrate Plus Cold Flow Improver

Premium, year-round diesel fuel additive that provides improved efficiency and maximum cold-weather performance. Combines the superior detergency and lubricity of AMSOIL Diesel Concentrate with the excellent anti-gelling properties of AMSOIL Cold Flow Improver in one convenient package without sacrificing performance. Two ounces treat five gallons of fuel. One bottle treats 40 gallons.

STOCK#	UNITS	PKG./SIZE	WT. LBS.	COST
DFCCN	EA	(1) 16-oz. Bottle	1.2	9.45
DFCCN	CA	(12) 16-oz. Bottles	14.4	111.70
DFC05	EA	(1) 5-gal. Pail	40.0	274.65

DRC



Keep a bottle on hand for emergencies

ACB



APF



ALS



Hundreds of household uses

Diesel Recovery

Quickly and effectively dissolves the wax crystals that form when diesel fuel surpasses its cloud point. Quickly liquefies gelled diesel fuel, thaws frozen fuel filters and reduces the need for a new filter, saving money and allowing the operator to continue driving with minimal downtime. Performs well in all diesel fuels, including ULSD, off-road and biodiesel. Alcohol-free and non-corrosive. One ounce treats one gallon of fuel. One bottle treats 30 gallons.

STOCK#	UNITS	PKG./SIZE	WT. LBS.	COST
DRCCN	EA	(1) 30-oz. Bottle	2.0	12.60
DRCCN	CA	(12) 30-oz. Bottles	24.0	149.85

Cetane Boost Diesel Fuel Additive

Improves combustion efficiency to increase power in diesel engines. Raises cetane three to seven numbers. Also improves low-temperature starting, fuel ignition quality and reliability. One ounce treats up to 10 gallons of fuel. One bottle treats up to 160 gallons.

Five-gallon pails are filled to 98 percent of packaging capacity to allow for product expansion in warm temperatures.

STOCK#	UNITS	PKG./SIZE	WT. LBS.	COST
ACBCN	EA	(1) 16-oz. Bottle	1.3	8.55
ACBCN	CA	(12) 16-oz. Bottles	15.6	101.05
ACB05	EA	(1) 5-gal. Pail	43.3	234.65

Power Foam®

Improves starting and performance. Cleans dirty intake systems and spark plugs and frees sticky valves. Also removes gum, varnish and carbon deposits from engine exterior surfaces.

STOCK#	UNITS	PKG./SIZE	WT. LBS.	COST
APFSC	EA	(1) 18-oz. Spray Can	1.5	7.55
APFSC	CA	(12) 18-oz. Spray Cans	18.0	89.40

Silicone Spray

Perfect for lubricating non-metallic surfaces that come into contact with metal, nylon, cardboard, fiberglass, wood or plastic surfaces. Works great as a suede protectant. Use anywhere a light-duty or silicone lubricant is required. Special nonstain formula. USDA H-1 rated.

STOCK#	UNITS	PKG./SIZE	WT. LBS.	COST
ALSSC	EA	(1) 10-oz. Spray Can	0.9	7.05
ALSSC	CA	(6) 10-oz. Spray Cans	5.4	41.60

AMP



Metal Protector

Disperses water and protects metal surfaces from rust and corrosion. Penetrates existing rust build-up and loosens bolts. Also dries wet electrical systems. A must for any home or shop. Keep a can in your vehicle too.

STOCK#	UNITS	PKG./SIZE	WT. LBS.	COST
AMPSC	EA	(1) 8.75-oz. Spray Can	0.8	5.65
AMPSC	CA	(12) 8.75-oz. Spray Cans	9.6	66.15

AMH



Heavy Duty Metal Protector

A heavy-duty spray lubricant fortified with special rust and corrosion inhibitors. It penetrates and adheres to metal surfaces, leaving a dry, long lasting wax-like protective coating. Dries completely and doesn't attract dust. Ideal for motorcycle, bicycle and ATV chains. Also works well as an undercoat, preventing rust and eliminating squeaks.

STOCK#	UNITS	PKG./SIZE	WT. LBS.	COST
AMHSC	EA	(1) 16-oz. Spray Can	1.4	7.90
AMHSC	CA	(12) 16-oz. Spray Cans	16.8	93.05

FLSH



Engine and Transmission Flush

Helps restore operating efficiency, increase fuel economy and reduce emissions in gasoline and diesel engines and automatic transmissions. Its potent, detergent-based formula dissolves and disperses sludge, varnish and deposits, promoting lower operating temperatures and reduced oil consumption. More environmentally friendly than solvent-based products, providing safer cleaning action and easy disposal with waste oil.

STOCK#	UNITS	PKG./SIZE	WT. LBS.	COST
FLSHCN	EA	(1) 16-oz. Bottle	1.2	9.10
FLSHCN	CA	(12) 16-oz. Bottles	14.4	107.45
FLSH05	EA	(1) 5-gal. Pail	40.0	265.70

Propylene Glycol Antifreeze and Engine Coolant

Combines the benefits of biodegradability, low toxicity and all-climate protection. AMSOIL Propylene Glycol Antifreeze and Engine Coolant is safer for kids and pets than ethylene glycol coolants. Offers protection for 750,000 miles/7 years for over-the-road diesel trucks and 250,000 miles/7 years for gasoline vehicles. Compatible with all other major antifreeze products.

ANT



STOCK#	UNITS	PKG./SIZE	WT. LBS.	COST
ANT1G	EA	1 Gallon	9.8	39.45
ANT1G	CA	4 Gallons	39.2	156.10

To test freeze protection and additive concentration, order antifreeze test strips:

STOCK#	UNITS	PKG./SIZE	WT. LBS.	COST
G1164	EA	50 Strips	0.1	12.65
G1165	EA	6 Strips	0.1	3.95

RDCB



Dominator® Coolant Boost

Provides quick and effective heat transfer inside radiator and cylinder heads, resulting in reduced operating temperatures, more efficient operation, increased horsepower and quicker engine warm-up times. Robust mixture of corrosion inhibitors effectively protect the radiator, heater core, water pump, cylinder heads, engine block and intake manifold from the damaging effects of corrosion. Recommended with both racing applications using straight water coolant and automotive applications using 50/50 coolant/water mixtures.

STOCK#	UNITS	PKG./SIZE	WT. LBS.	COST
RDCBCN	EA	(1) 16-oz. Bottle	1.1	11.10
RDCBCN	CA	(6) 16-oz. Bottles	6.6	65.85

BF3



BF4



High Performance Brake Fluid

Provides superior performance in auto/light truck, high-performance, racing and powersports applications. Maintains stable viscosity over a wide temperature range. Superior additive package raises boiling point to more than 232°C (450°F). Water is kept in suspension, slowing its effects on braking systems. High boiling temperature ensures maximum life and reliable braking power in extreme conditions.

Series 500 High Performance DOT 3 Brake Fluid

FMVSS 116 • SAE J1703 • ISO 4925 • Federal Specification V V-B-680

STOCK#	UNITS	PKG./SIZE	WT. LBS.	COST
BF3SN	EA	(1) 12-oz. Bottle	1.0	7.20
BF3SN	CA	(12) 12-oz. Bottles	12.0	84.80

Series 600 High Performance DOT 4 Brake Fluid

FMVSS 116 • SAE J1704 • Federal Specification V V-B-680

STOCK#	UNITS	PKG./SIZE	WT. LBS.	COST
BF4SN	EA	(1) 12-oz. Bottle	1.0	13.60
BF4SN	CA	(12) 12-oz. Bottles	12.0	161.75

PSF



Synthetic Universal Power Steering Fluid

Effectively reduces friction and delivers excellent wear protection and lubricity, resulting in cooler operating temperatures, longer component life and quieter operation. Low pour point ensures immediate lubrication at startup and in cold temperatures, while high viscosity index resists thermal breakdown and maintains maximum protection in high temperatures.

Ford 9M2C138-CJ, M2C33-F & ESW-M2C128-C&D • Volkswagen TL-VW-570-26 & TL-52146 • GM 9985010 Saginaw Power Steering Systems • DaimlerChrysler MS1872 & MS5931F • America Motor Corporation C4124 • Navistar TMS 6810 • Acura/Honda • Mercedes Benz • Saab • Subaru • Audi

STOCK#	UNITS	PKG./SIZE	WT. LBS.	COST
PSFCN	EA	(1) 16-oz. Bottle	1.1	7.05
PSFCN	CA	(12) 16-oz. Bottles	13.2	83.35



Fluid Extraction Pump

STOCK#	WT.LBS.	COST
G2576	2.0	16.75

Aids in the removal of power steering fluid, engine oil, drivetrain lubricants and engine coolant.

AMW



BriteSide® Miracle Wash® Aerosol Spray

A unique dry car wash and polish delivers outstanding performance and quick, easy and economical application. No water required. Specially formulated surfactants lift dirt and other particles from the surface and hold them in suspension. Miracle Wash then acts as a shield, protecting the surface from abrasion while you wipe the dirt clean. Repels dust and light dirt particles and protects against the sun's ultraviolet rays.

STOCK#	UNITS	PKG./SIZE	WT. LBS.	COST
AMWSC	EA	(1) 13-oz. Spray Can	1.0	9.40
AMWSC	CA	(6) 13-oz. Spray Cans	6.0	55.65

Aftermarket Partners

AMSOIL also offers premium products from its aftermarket partners, including Donaldson, WIX and MANN filters; NGK spark plugs and wires; TRICO wiper blades and Mothers® appearance products.

For product and pricing information, call 1-800-956-5695 (Monday - Friday, 7 a.m. - 5 p.m. Central Time) or contact the AMSOIL Dealer listed on the back of your catalog (if one is listed).



Donaldson
Filtration Solutions

WIX
FILTERS

**MANN
FILTER**



TRICO

MOTHERS
Polishes • Waxes • Cleaners



The Company of FIRSTS

Over 35 Years of Innovation and Leadership

FIRST API-rated 100 percent synthetic motor oil.

FIRST to introduce the concept of “extended drain intervals” with a recommended 25,000-mile/12-month drain interval.

FIRST to manufacture synthetic gear lube for automotive use.

FIRST to produce synthetic motor oil for diesel engines.

FIRST to produce synthetic motor oil for racing engines.

FIRST to produce synthetic motor oil for turbocharged engines.

FIRST to produce synthetic motor oil for marine engines.

FIRST to introduce synthetic oils that legitimately contribute to improving fuel efficiency.

FIRST to manufacture a 100:1 pre-mix synthetic 2-cycle oil.

FIRST to manufacture synthetic automatic transmission fluid for automotive use.



Black Softshell Jacket

High quality wind and water resistant jacket is constructed of a 95% polyester/5% spandex shell for easy movement. Soft brushed polyester lining. Soft brushed polyester lining. Adjustable velcro cuffs, three zip outside pockets and two velcro inside pockets. Sizes S-3X.



STOCK #	SIZE	COST
G2810	S	70.15
G2811	M	70.15
G2812	L	70.15
G2813	XL	70.15
G2814	2X	73.45
G2815	3X	76.45

Logo Detail



Decals

STOCK #	SIZE	COST
G1051	4" - pkg. of 20	2.45
G1058	7" - pkg. of 10	2.00
G1110	13"	0.85 ea.
G1119	20 1/2"	1.85 ea.
G1123	36"	3.45 ea.
G1323	48"	10.20 ea.

**FREE decal
with each order!**

Racing Decals

STOCK #	SIZE	COST
G1789	4" - pkg. of 10	2.20
G1800	7" - pkg. of 10	4.10
G1790	12" - pkg. of 5	4.15
G1791	20"	2.35 ea.
G1792	36"	4.25 ea.
G1793	48"	12.00 ea.





T-Shirt Front

Pro Racing T-Shirt

Constructed of 50/50 cotton/polyester blend for comfort and durability.

Sizes S-3X.

STOCK #	SIZE	COST
G2642	S	15.15
G2643	M	15.15
G2644	L	15.15
G2645	XL	15.15
G2646	2X	17.05
G2647	3X	18.70



T-Shirt Back

American Original T-Shirt

Constructed of 50/50 cotton/polyester blend to reduce fading. Features "distressed" printing. Sizes S-3X.

STOCK #	SIZE	COST
G2892	S	15.15
G2893	M	15.15
G2894	L	15.15
G2895	XL	15.15
G2896	2X	17.05
G2897	3X	18.70



Hat Back

Black Mesh Back Cap

Black twill sandwich visor cap with side and back mesh panels. Embroidered logo and velcro closure.

STOCK #	COST
G2738	14.60

Speedway Cap

Embroidered logo and design. Velcro closure.

STOCK #	COST
G2832	14.60



Hat Back



The First in Synthetics®

AMSOIL INC.
One AMSOIL Center
Superior, WI 54880

WE HONOR



(Discover in U.S. only)

Your Servicing AMSOIL Dealer

Refer to this referral number to save time and make ordering easier. Call toll-free at 1-800-956-5695. Credit card orders only. ▼

Referral # _____